

State of Wyoming Corner Record

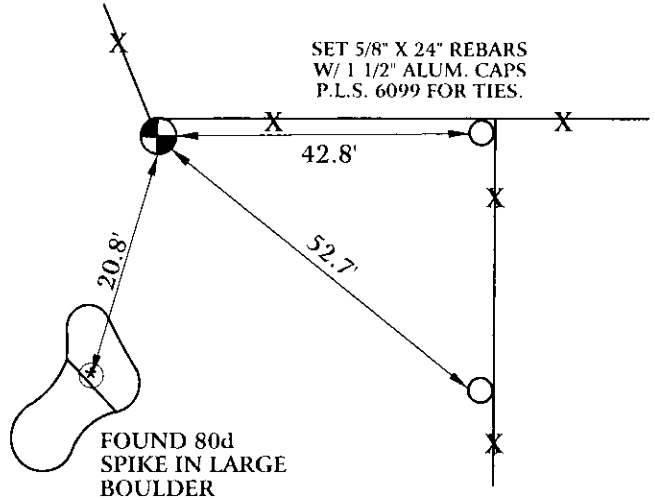
(In compliance with the CORNER PERPETUATION AND FILING ACT, Wyoming Statutes, 1997 Section 33-29-140 et. seq., and the Rules and Regulations of the Board of Professional Engineers and Professional Land Surveyors)

Reverse side of this form may be used if more space is needed.

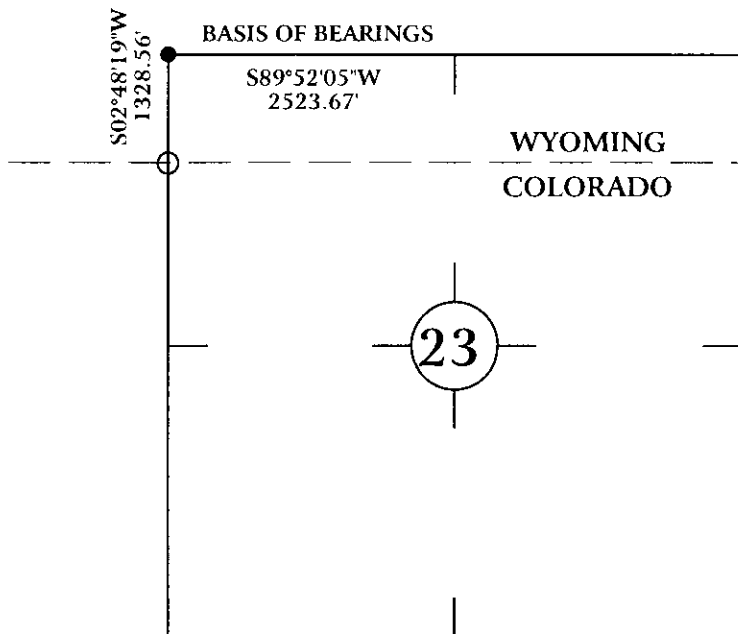
Record of original survey and citation of source of historical information (if corner is lost or obliterated). Description of corner monumentation evidence found and/or monument and accessories established to perpetuate the location of this corner. Sketch of relative location of monument, accessories, and reference points with course and distance to adjacent corner(s) (if determined in this survey). Method and rationale for reestablishment of lost or obliterated corner.

**ORIGINAL CALL FOR 20" X 10" X 8" SANDSTONE IN MOUND OF STONES.
FOUND 5/8" COPPER ROD WITH 1 1/2" COPPER CAP IN EAST-WEST FENCE LINE
NEXT TO PINK GRANITE STONE WITH FAINT MARKINGS. ALL TIES ARE TO COPPER
MONUMENT.**

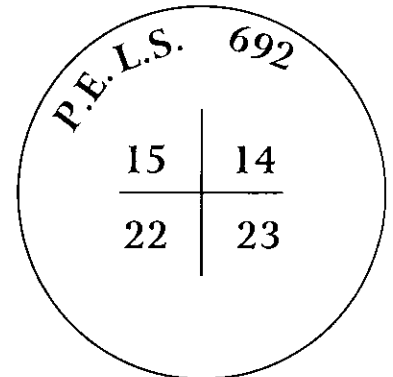
**SET 5/8" X 24" REBARS WITH 1 1/2" ALUMINUM CAPS P.L.S. 6099 FOR TIES AS SHOWN
BELOW.**



Monument location



Monument Inscription



1 1/2" COPPER CAP ON
5/8" COPPER ROD.

Date of Field Work: 10/8/04

Office Reference: AW04-8634

Cross Index Plat

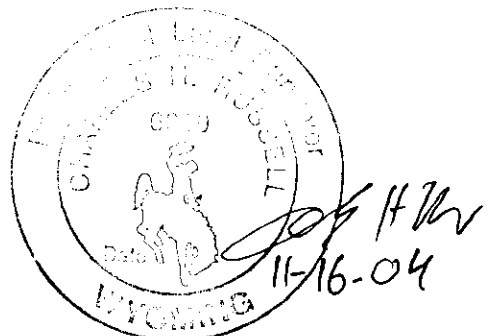
1	2	3	4	5	6	7	8	9	10	11	12	13	14	15	16	17	18	19	20	21	22	23	24	25	
A	6	5	4	3	2	1																			A
B																									B
C																									C
D																									D
E																									E
F																									F
G	7	8	9	10	11	12																			G
H																									H
I																									I
J																									J
K																									K
L	18	17	16	15	14	13																			L
M																									M
N																									N
O																									O
P	19	20	21	22	23	24																			P
Q																									Q
R																									R
S																									S
T	30	29	28	27	26	25																			T
U																									U
V																									V
W																									W
X	31	32	33	34	35	36																			X
Y																									Y
Z																									Z

Firm/Agency, Address
CHARLES H. RUSSELL P.L.S. 6099
AMERICAN WEST LAND SURVEYING CO.
29 SOUTH 4TH AVENUE
BRIGHTON, CO 80601

Telephone Number:
303-659-1532

This corner record was prepared
by me or under my direction
and supervision.

SEAL & SIGNATURE



RECORDED 2/17/2005 AT 1:50 PM REC# 409604 BK# 1865 PG# 144
DEBRA K. LATHROP, CLERK OF LARAMIE COUNTY, WY PAGE 1 OF 1

Corner Name Northwest Corner Section 23, T 12 N, R 70 W, 6th P.M.

Cross-Index No.: N-17

County: Laramie Wyoming

SBRPEPLS/PLSW: March 1994; PLSW January 1998